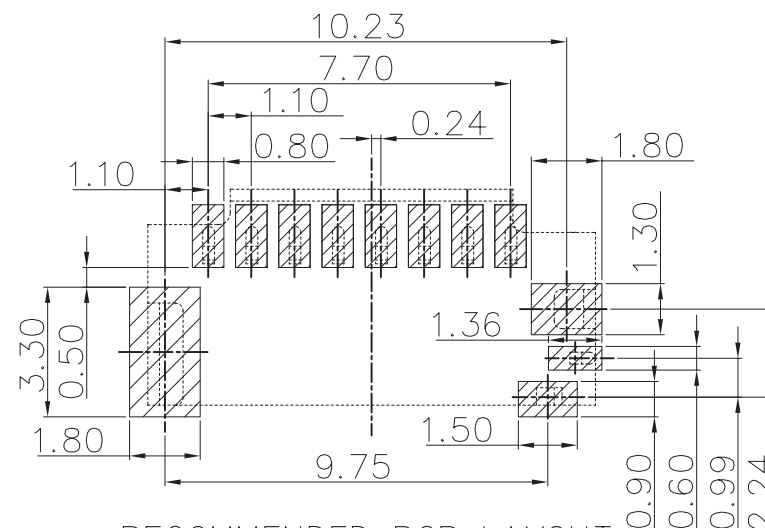
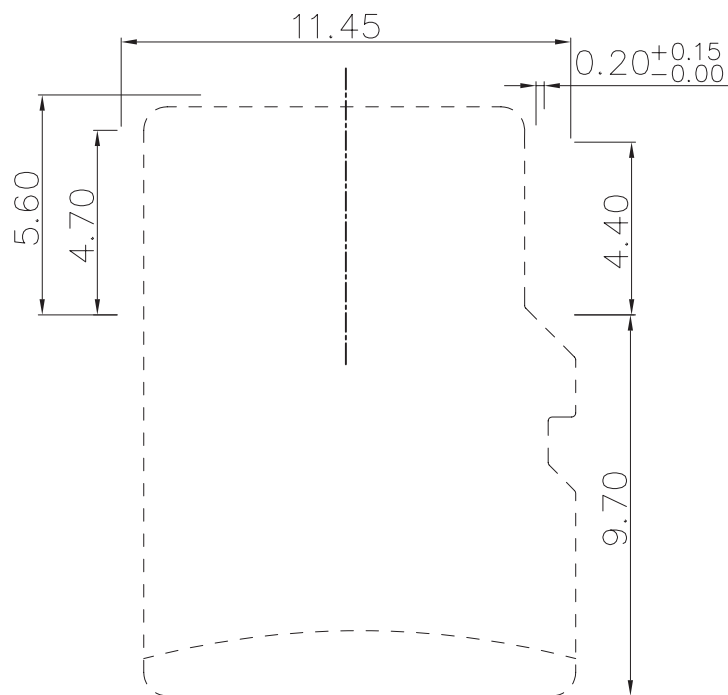


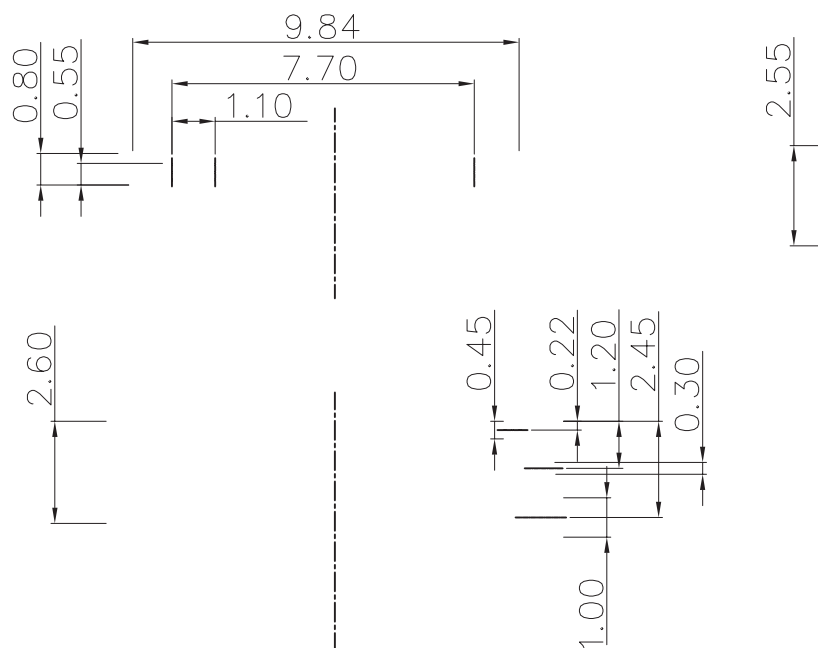
REV.	ECN.NO.	MODIFY.CONTENT	DATE
A		NEW	2011/10/31



RECOMMENDED PCB LAYOUT
TOL: (± 0.05)

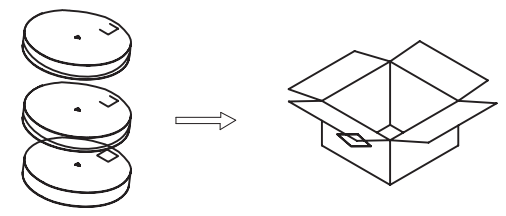
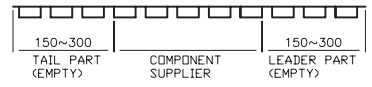
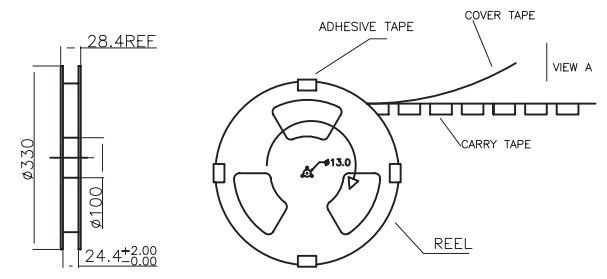
NOTES:

- Material:
Housing: HI-Temp plastic UL 94V-0
Contact: Copper Alloy
Nail: STANLESS STEEL
- Finish :
CONTACT: G/F" Gold plated on conatct area;
G/F plated on solder tails, Base Nickel : 50u"Min
Nail: 50u" NICKEL UNDER, 100u" TIN OVERALL

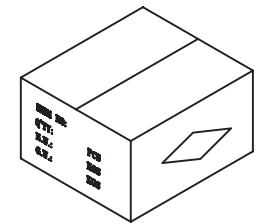


GENERAL TOLERANCE		DWG NO.	LZA0810-01	APPD:	WIND	Scale	1: 1
X ± 0.45	x. $\pm 5^{\circ}$	Title	短型 T CARD 2.55H 有孔	CHKD:		UNIT	mm
.X ± 0.35	.x $\pm 2^{\circ}$			DR:			
.XX ± 0.25	.xx $\pm 1^{\circ}$	Part NO.	ATFFS255A01BR009	Date	2012/08/10		
.XXX ± 0.15	.xxx $\pm 0.5^{\circ}$	东莞市汉硕电子科技有限公司					
SHEET	1/1						

REV.	ECN.NO.	MODIFY.CONTENT	DATE
A		NEW	2012/04/13

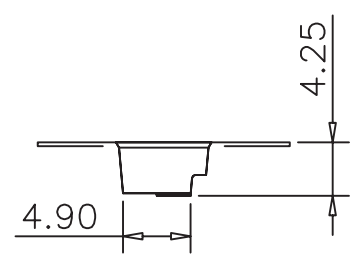
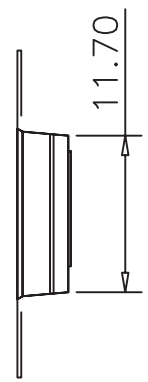
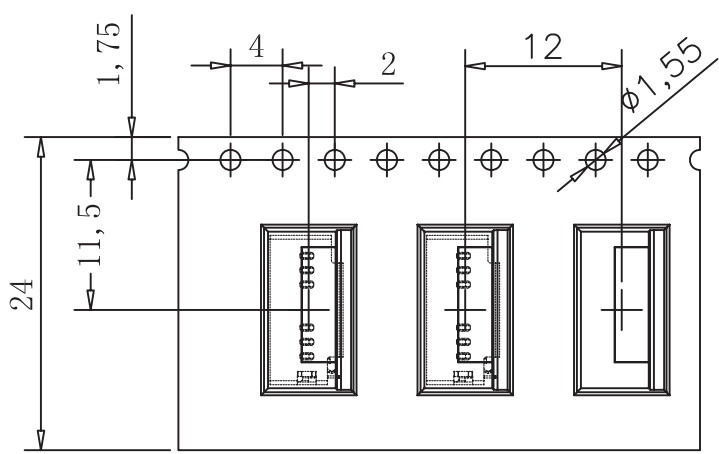


每箱装12盘, 依次叠在一起(图一)



封箱, 填写相关内容(图二)

对应三视图



NOTE:

1. CARRY TAPE(黑色)前部分与尾部分各留出150~300mm长度不装产品
2. 每穴放置1PCS产品, 放置方式如图所示
3. 包装机包好后, 在REEL的个等分点贴上胶带, 以防止REEL张开, 每REEL贴1PCS标签
4. 包装数量: 1500PCS/REEL, 12REEL/CARTON, 18000PCS/CARTON
5. 依次将产品放入箱内, 共放12盘(图示一)
6. 封箱, 在封好的纸箱上按客户要求写上料号, 数量等(图示二)
7. 顺向出料, 单孔朝外。
8. 顺向出料, 双孔按图示三

GENERAL TOLERANCE		DWG NO.	LZA0519-005	APPD:	WIND	Scale	1:1
X.±0.45	x.±5'	Title	短型 T CARD 2.55-3.0H 有孔 包装图	CHKD:		UNIT	mm
.X±0.35	.x'±2'			DR:			
.XX±0.25	.xx'±1'	Part NO.		Date	2012/04/13		
.XXX±0.15	.xxx'±0.5'						
SHEET	1/1	东莞市汉硕电子科技有限公司					