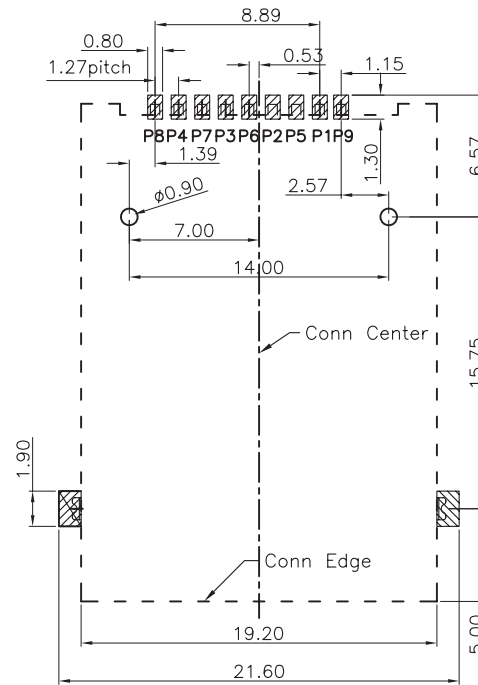
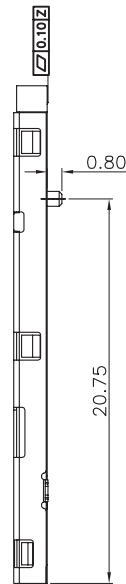
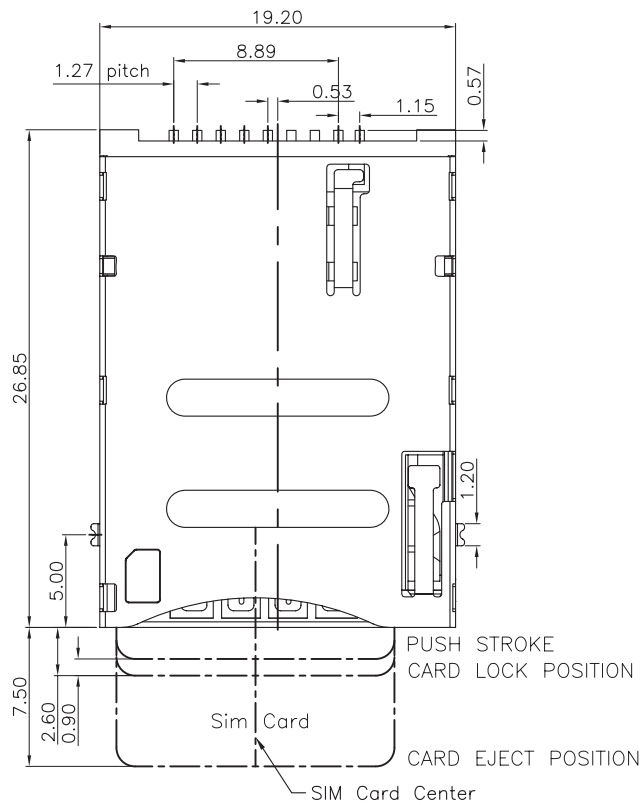


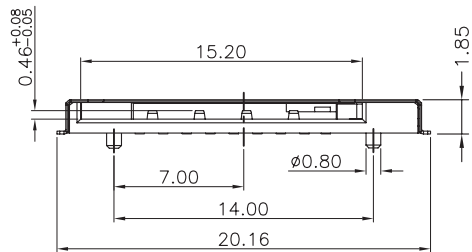
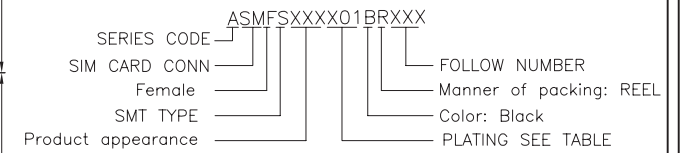
REV.	ECN.NO.	MODIFY.CONTENT	DATE
A		NEW	2011/12/31



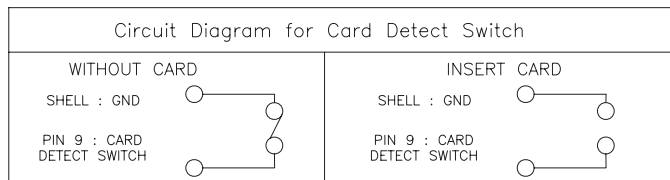
Specification:

*Electrical Characteristics:
 Current Rating;1.5A.
 Withstanding Voltage:AC500V r.m.s.
 Insulation Resistance:1000Megohms Minimum at DC 500V
 Contact Resistance:100Miliohms Maximum.
 *Mechanical Characteristics:
 Mating Cycles:5000 Insertions.

PART NUMBER INFORMATION :

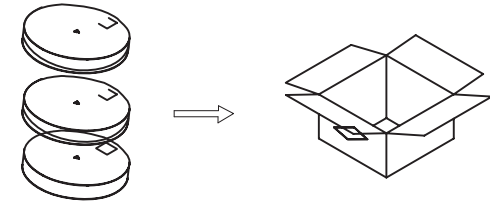
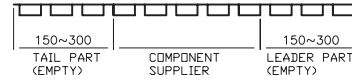
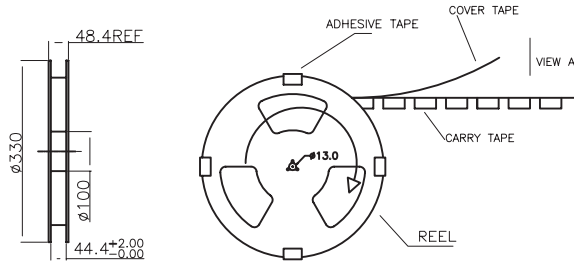


CONNECTOR TERMINAL NO	PIN NO
PIN 1	VCC:PWR SIGNAL AND GND
PIN 2	RST:RESET SIGNAL
PIN 3	CLK:CLOCKING SIGNAL
PIN 4	RESERVED
PIN 5	GND:PWR SIGNAL AND GND
PIN 6	VPP:PROGRAMMING VOLTAGE
PIN 7	I/O:SERIAL DATA INPUT/OUTPUT
PIN 8	RESERVED

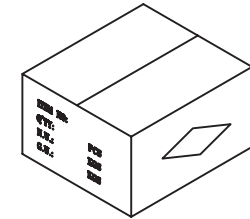


GENERAL TOLERANCE		DWG NO.	LZA1231-02	APPD:	WIND	Scale	1:1
X.±0.25	x.'±5'	Title	SIM CARD PUSH PUSH (8+1PIN)	CHKD:		UNIT	mm
.X±0.20	.x'±2'			DR:			
.XX±0.15	.xx'±1'	Part NO.	ASMFS185S01BR014	Date	2012/12/31		
.XXX±0.08	.xxx'±0.5'	<p style="text-align: center; font-size: 1.2em; font-weight: bold;">东莞市汉硕电子科技有限公司</p>					
SHEET	1/1						

REV.	ECN.NO.	MODIFY.CONTENT	DATE
A		NEW	2012/04/13

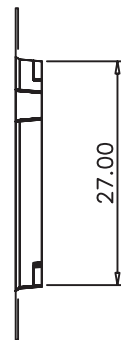
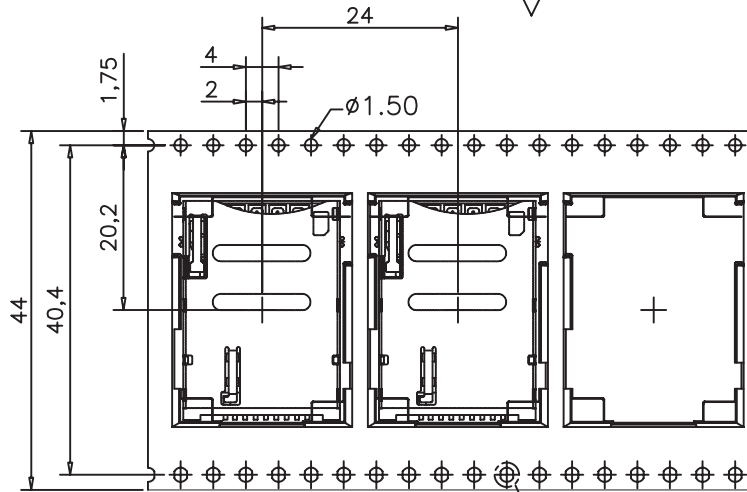


每箱装7盘, 依次叠在一起(图一)

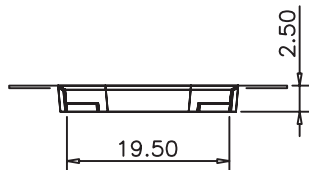
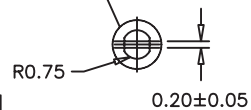


封箱, 填写相关内容(图二)

对应三视图



图示三



NOTE:

1. CARRY TAPE(黑色)前部分与尾部分各留出150~300mm长度不装产品
2. 每穴放置1PCS产品, 放置方式如图所示
3. 包装机包好后, 在REEL的个等分点贴上胶带, 以防止REEL张开, 每REEL贴1PCS标签
4. 包装数量: 750PCS/REEL, 7REEL/CARTON, 5250PCS/CARTON
5. 依次将产品放入箱内, 共放7盘(图示一)
6. 封箱, 在封好的纸箱上按客户要求写上料号, 数量等(图示二)
7. 顺向出料, 单孔朝外。
8. 顺向出料, 双孔按图示三

GENERAL TOLERANCE		DWG NO.	LZA0519-016	APPD:	WIND	Scale	1:1
X.±0.45	x.±5°	Title	SIM CARD SMT TYPE PUSH 6+1包装图	CHKD:		UNIT	mm
.X±0.35	.x'±2°			DR:			
.XX±0.25	.xx'±1°	Part NO.		Date	2012/04/13		
.XXX±0.15	.xxx'±0.5°						
SHEET	1/1	东莞市汉硕电子科技有限公司					